

Modular House M-34 | Offer

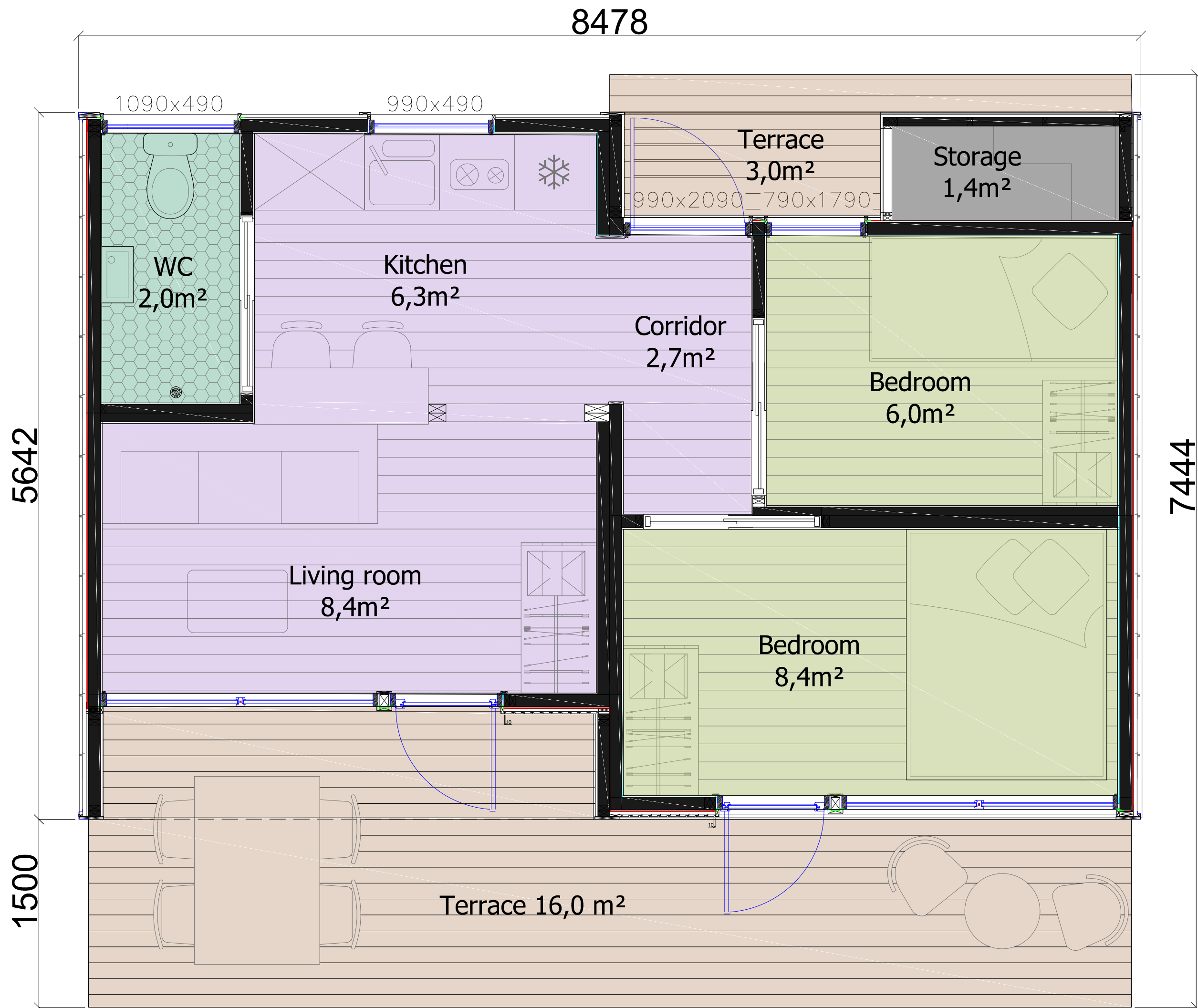


34m² OF COZY LIVING AREA, 1,5 m² PANTRY AND 20m² TERRACE

- ✓ DIMENSIONS DESIGNED TO FIT IN THE TRAILER
- ✓ 1 HOUSE PER 2 TRAILERS
- ✓ 6 MODULES - 2 BEDROOMS
- ✓ EACH MODULE WEIGHTS LESS THAN 2 TONES - LIFTED BY A FORKLIFT

ITEMS	DELUXE
Timber Frame Box with finished external and internal layers (Walls, roof, Floor)	✓
Electrical instalation	✓
Plumbing instalation & ventilation slots	✓
Terrace	✓
Wooden frame Windows & doors, double glazed	✓
Kitchen with A++ fridge	✓
WC&Shower equipments, washbin with cupboard, mirror	✓
AC in main area with heating function	✓
Heated floor in main area	✓
Heated floor in WC	✓
Boiler	✓
Internal and external lighting units, sockets and switches	✓
Closet (to hide the boiler in + clothes space)	✓
Assembly and Transport	✓
Foundation. Furniture: bed, couch, table	-
Unloading from the trailer (Forklift or Crane)	-
Price:	On request

Prices do not include import duties or VAT.



8478

5642

1500

7444

1090x490

990x490

990x2090 790x1790

Terrace
3,0m²

Storage
1,4m²

WC
2,0m²

Kitchen
6,3m²

Corridor
2,7m²

Bedroom
6,0m²

Living room
8,4m²

Bedroom
8,4m²

Terrace 16,0 m²